

# HTA

**presentation:**

**COMPANY PROFILE,  
PRODUCTS AND SERVICES**



# ABOUT US

Where do we come from?



*We have a passion: using robotics to support lab teams in achieving better and more robust results.*

- **Leading automation provider for the scientific instruments industry.** We have supplied a wide range of analyzer front-ends and sample preparation automated devices for 25+ years.
- **Most of our applications** are in the **analytical chemistry (chromatography and spectroscopy)** market, which is served indirectly by OEMs and directly by distributors. By OEM-only we also offers products for **life science** (capping, sealing and liquid handling add-ons), **clinical** (niche not-trivial products) and **physical properties** market.
- **We are committed** to pursuing **technical leadership, quality and service** as key factors to **succeed together with our customers**. Our knowledge and experience of applications make our products **optimized** and **cost effective**.
- A **truly global company** with a worldwide installed base: our headquarters and main facility is **located in Brescia (Italy)** within an intensive industrial area with a long tradition of automation techniques, electronics and mechanics.

*Quality Management System certified UNI EN ISO 9001:2015 and 13485:2016 (for Medical Devices)*

# GC AUTOSAMPLER

Automatic Liquid Sampler



**We fit all GCs and GC-MSs!**

Touch screen experience | **Easy relocation across GCs in the lab** also between different GC brand/model | **Right sample capacity: 3 models to fit every need from 15 to 200+ samples** | Fit every applications: multi-phase sampling, sandwich injection, priority sampling, ambient headspace sampling, nanoliter injection... | **Features SyringeID<sup>1</sup>**

<sup>1</sup> Patented

# GC AUTOSAMPLER

Headspace and All-In-Ones Autosampler



## Proven Superior Headspace Technology

High performing gas-tight heated syringe: an effective system that allows **adjustable sample volume** (without loop changes) and **sequential injections even of samples featuring highly dissimilar characteristics** | It features **the lowest total cost of ownership in the industry** and **advanced features** such as vial leakage check<sup>1</sup>, prep-ahead, progressive mode and MHC | **SPME<sup>2</sup> option** for greater injection modalities choice

<sup>1</sup> Patented

<sup>2</sup> SPME products are sold under license from SUPELCO under U.S. Patent 5,691,206 and/or any divisions, continuations or revisions thereof.

# ● LC AUTOSAMPLER

HT4000L, our premium choice for all liquid chromatography applications including UHPLC, LC/MS, nanoLC, prepLC and IC



## The autosampler lab-automation ready!

**Easy To Use:** robust by design make itself the ideal instrument for installation in any scenario. | **Large sample capacity:** 176 2ml vials per run. Different kind of sample vessels are also supported: vials (2/4/6/10/20/40ml), test tubes, tube blocks or plates. | **Modular and scalable:** a wide range of accessories can be sourced and added on the field at any time to fully automate the sample prep

# LC AUTOSAMPLERS

HT1500L, our entry-level choice



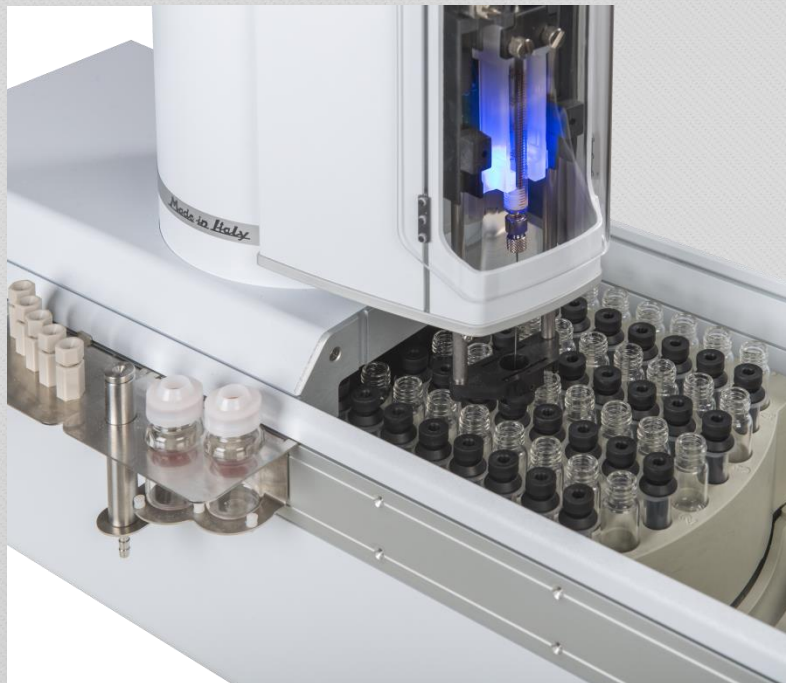
## For your HPLC routine

**Easy-To-Operate.** Keypad operations enables simple automation of any existing HPLC and makes the autosampler easy to control by any chromatography software.

**No frills.** We have showered the HT1500L with all essential features a cutting edge HPLC system calls for - excellent analytical performance, good sample capacity, and of course, uncompromised reliability, robustness and durability - while eliminating anything unnecessary to keep your costs as a minimum. No frills. No compromise.

# AUTOMATED SPE

HT4000E: flexible HPLC autosampler that can automate your Solid Phase Extraction routine



Designed to automate SPE-LC(MS) applications, it takes care of sample purification **up to the collection of eluted sample in vials (offline mode)** or can proceed further **up to the direct injection into the HPLC or LC-MS analyzer (online mode)**.

- Do more than any HPLC autosampler
- Easy SPE method design
- Constant flow elution technology
- Improve reproducibility and throughput
- Reduce costs and delays

# SAMPLE PREP WORKSTATIONS

Increase the productivity, Improve the quality of your data

HTA's workstations **automate the sample preparation process** by taking care of a large number of operations such as **liquid handling** (aspiration, dispense, mixing, dilution, derivatisation, sample displacement), **filtration or purification** (SPE, syringe filter), **vessel handling** (weighing, capping/uncapping, vortex), **identification** (BCR, RFID), **and sample conditioning** (cooling, heating), etc..

The **modular design** allows easy configuration and affordable costs. Furthermore, changes and upgrades to existing configurations are easy. **HTAPREP – lab automation software – offers powerful method development and smart sample processing:** complex routine and experiments can be defined in a few easy steps. Collect data in database, export them to MS Excel or browse in a convenient PDF file.





# AUTOMATIC SAMPLE CHANGERS

For Spectroscopy: ICP-OES, ICP-MS, Flame AAS and more



**The age of smarter autosamplers is here!**

Optimized Layout to **save bench space** and reduce costs of ownership  
| **Short flow-path** | **Removable racks** for continuous feeding | Rack  
polarization | **Support mixed types of sample tubes** | **ARM  
processor** | Encoder-driven solution to for the best accuracy |  
**Corrosion-resistant design**

# ● CONTRACT DESIGN AND MANUFACTURING SERVICE

Bringing your ideas into real products

## EXPERIENCE

HTA has been offering its contract design and manufacturing services for **25+ years** to scientific instruments industry.

## SERVICES

HTA has a **complete offering** that covers from design to post-production assistance needs, assuring **high versatility in volume, positioning and competence.**

## PLATFORM CONCEPT

HTA offers its versatile robotic platform on which you can develop your own solution, when it is less interesting to proceed with an ex-novo solution.

*Many respected companies in the analytical, life-science and clinical field have already chosen HTA as OEM partner for automation. Join them now!*

# CONTACTS

How to reach us?



HTA s.r.l.  
via del Mella 77/79  
25131 Brescia - ITALY

T: +39-030-3582920  
F: + 39-030-3582930  
[www.hta-it.com](http://www.hta-it.com)



## Sales Enquiries

[orders@hta-it.com](mailto:orders@hta-it.com)



## Technical Support

[support@hta-it.com](mailto:support@hta-it.com)



## General Enquiries

[info@hta-it.com](mailto:info@hta-it.com)



**THANK YOU!**

**We are ready for your  
questions**